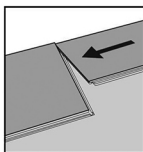
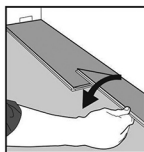


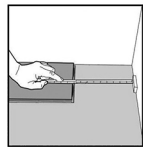
1. Start with the first tile in the left corner of the room, long-side facing out from the wall on the length and to the right on the width. Work from left to right.



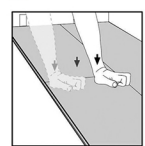
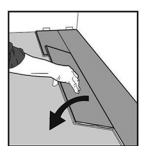
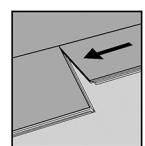
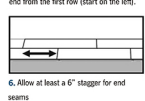
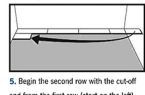
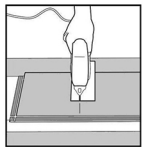
2. Position the following tile as an exact extension of the first one. Place this tile snugly and tight to the short end of the first tile.



3. Lower the tile down in a single action movement. During the fold down, make sure the planks are tight against each other. Afterwards, press or slightly knock at the short end and self installed.



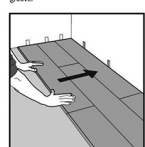
4. Measure and cut to fit the last tile of the row. To do this you can use a utility knife to score the surface at the appropriate point and then break the tile over an edge. Alternatively a wet tile cutter or Miter saw can be used.



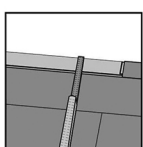
7. Starting with the first plank in the row, raise the plank at a 45° angle, insert the lengthways tongue into the lengthways groove.

8. Lower the tile while holding the two together until they are flat and tightly together.

9. Close the joint using hand pressure, tapping block or pull bar.



10. Adjust the distance to the wall by pulling floor out and placing spacers of 5-6mm against the wall.



11. Minimum tile width should be at least 5cm. Remember to allow for a gap of 5-6mm to wall. Tip: Put a spacer before measuring. Cut the tile lengthwise and glue the short ends.

- How to shorten wooden doorframes: Position a loose plank face down close to the doorframe and cut with an undercut or jamb saw.
- People can walk on the flooring immediately after the installation.
- Install new base or moldings: fasten these to the wall, never to the floor.
- High density foam underlayment should be used.

PRIME WATERPROOF FLOORING

Maintenance Instructions

CARE AND MAINTENANCE OF PRIME WATERPROOF FLOORING

Once the Prime Waterproof flooring has been installed, vacuum or use a dust mop to clear the floor of any loose dirt, residual dust, or debris. Do NOT use treated dust mops. We recommend using diluted Neutral pH Floor cleaner to wipe the floor, however, a lightly damp mop can be also used. **Follow cleaner label instructions.**

The single greatest cause of damage to any flooring or floor finish is abrasion from dirt and grit. Regularly sweep or vacuum the floor to remove dirt and dust. Do not use a vacuum with a beater bar or hard bottomed electric brooms without padding, this can cause floor scratches.

Do not use harsh cleaners and chemicals, abrasive scrubbing pads, abrasive tools, or abrasive cleaners as they can also scratch the floor. Do not use detergents and do not use floor shining products like "mop and shine" types on the floor.

Furniture should have felt pads attached to the feet to avoid scratching the floor. Heavy appliances or furniture should sit on non-staining large surface flooring protectors. When furniture has castors or wheels on the feet, they must be suitable for resilient floors, large surface non-staining, and swivel easily. Do not use ball-type castors because they can damage the floor.

Office chairs with castor wheels should be equipped with wide, rubber castors and protective mats under the chairs.

Protective mats should be non-staining as rubber mats may discolor the floor. All furniture pieces should have floor protectors under them. Walk-off mats should be used in entrances to help prevent dirt from being carried onto the floor.

The product should never be exposed to temperatures exceeding 140 degrees F. Avoid exposure to long periods of direct sunlight. Blinds or drapes should be closed during peak daylight. Exposure to excessive heat and light can thermally degrade the floor.

FLOOR POLISH APPLICATION AND DIRECTIONS

Over time floors may begin to lose their luster and may require an application of floor polish. When and where you apply the floor polish will depend on the traffic the floor receives.

1. Vacuum or dry sweep then damp mop floor to remove loose dirt and soil from floor. Thoroughly scrub and clean floor with Neutral pH cleaner to remove all soil.
2. Apply floor polish undiluted in a thin, even coat using a microfibre applicator mop. Do not use treated dust mops. **Follow polish label instructions.**
3. Apply 2-3 coats. Allow each coat to air dry completely (generally 30-60 minutes) before applying next coat.
4. Allow floor surface to dry overnight before heavy traffic use.

Before you start

- PRIME Waterproof Flooring is normally loose laid without adhesive, although full spread gluing is also possible; gluing may be required and recommended in wet areas or those with heavy rolling loads, please consult PRIME technical department if this applies to your installation.
- We recommend PRIME waterproof flooring to be acclimatized, but not required to acclimate for 24 hours. Store flat and fully supported during shipping and storage. Remove material from packaging, spread out if possible and allow to condition in room where installation is to take place at a constant temperature of 68° to 77° degrees Fahrenheit (20° to 25° C) for a period of 24 hours prior to installation.
- Check PRIME Waterproof Flooring for possible defects prior the installation. Complaints can only be accepted before installation. Slight variations in color and structure are designed to enhance natural appearance. Mixing the tiles creates a more natural appearance.
- Be aware that when exposed to excessive temperatures and direct sunlight, PRIME Waterproof Flooring, if loose laid may expand and contract causing problems with the locking system. Please consider these exposure when choosing your product and deciding if the product will require it being glued down in place.
- In facilities where walkers, wheel chairs are present, or in facilities with movement of heavy displays, racks, dentist chairs patient beds, etc. These types of installations may exert extreme stress and compromise the locking system. Therefore it is recommended that these installations be installed glued down. Please consult your PRIME representative or PRIME Technical Services.
- Determine if there is a need for noise reduction. Many residential applications like condos and senior living facilities require suppression between floors. We recommend using an acoustic underlayment (sub-floor mat) where there is a need for noise reduction between floors.

Subfloors

- Although PRIME Waterproof Flooring is water-resistant, they are not to be used as a moisture barrier. Your subfloor should be completely dry prior to installation of the vinyl floor.
- It is essential to perform moisture testing per ASTM F2170 (internal relative humidity) on all concrete floors. Results are not to exceed <92% IRH for loose lay click tiles and to be less than <85% percent when the tiles are to be glued down in place. pH testing must be performed per ASTM F710, results not to exceed 9.9
- Subfloors must be structured sound, solid, stable, level, plumb and true to a tolerance in plane of 1/4" in 10 feet (6mm in 4m). Cracks and holes must be filled with a fast setting cement-based polymer modified patching compound or equivalent. Any unevenness over 3/16" (4.7mm) must be sanded down or leveled. The surface must be clean or dirt, oil, glue residue etc. Carpet staples or adhesive residue should be removed prior to installation. Voids or humps in the subfloor will prevent the tiles from locking properly.
- Concrete shall be constructed per the guidelines contained in the ACI (American Concrete Institute) 302.2R-06: Guide for Concrete Slabs that Receive Moisture-Sensitive Flooring Materials <http://bit.ly/WHKhxH>
- PRIME Waterproof Flooring can be installed on existing firm floors (Linoleum, PVC...), but all textile floors must be removed. When laying the floor over existing ceramic tiles first level with a fast setting cement-based polymer modified patching compound.

Measurements

- Agree with the client on which direction the floor boards should run since this influences the visual size ratio of the space. Installation parallel to the longest wall or the main light-source is recommended for best visual effects.
- Pre-plan the floor by measuring the room first. If the width of the last row is less than 2" inches (5cm) lay out the room to achieve that the first and the last tile are equal in width.

- Snap lines on the substrate to identify the layout reference points. Tiles should be set using this reference to ensure tiles are aligned and will lock together correctly.
- In large areas where flooring will span in excess of 40' long, an expansion gap should be used. Otherwise place expansion space in under the door thresholds. Cover the expansion space with suitable coverings.
- Do not tight fit the tile to door casings, walls, or other abutments, undercut door casings for tiles to fit underneath and leave a minimum 3/16" inch space at all other abutment that cannot be undercut or placed on top of the tile.

Warranty

Limited Lifetime Residential, Limited 10-Year Commercial

- Our limited commercial warranty for PRIME Waterproof Flooring means that for ten years (commercial) or lifetime (residential), from the date of purchase, your floor will be free from manufacturing defects and will not wear through when installed and maintained properly according to instructions. This guarantee applies only to the original end user and proof of purchase is required for all claims. The guarantee is for replacement or refund of the material only, no labor. Claims for wear must show a minimum dime size area.
- High-heeled shoes, rolling carts, furniture and chairs without protective pads can damage the floor and are not covered by this warranty.

Installation

Different production runs

- Vinyl floors can have slight color variations in between production runs. Before starting the installation, it is best to check the production run# which is indicated on the label on the carton. If you find that you have cartons from different production runs, it is highly recommended that you open cartons and install a mix of tiles from each different production run on your floor. This will result in a more natural-looking floor.
- Do not install PRIME Waterproof Flooring over soft subfloors such as carpet.
- High density foam underlayment should be used.

- PRIME Waterproof Flooring provides a very tight fit. Proper care must be used to ensure all seams are tight at the end of installation. An unprofessional installation or use of improper tools can result in damage to the 5G locking profiles.
- Maintain a small expansion gap (minimum 3/16 of an inch) at all walls, columns and other abutments, these will be covered later with base or other moldings.

Installation over radiant heated subfloors

- PRIME Waterproof Flooring can also be installed on a radiant heated subfloor. Please consult your PRIME representative or PRIME technical if you have any questions.

Installation in direct sunlight of heavy load areas

- For application in direct sunlight or exposure to excessive heat or in areas with heavy rolling traffic (i.e. dentists chairs, wheelchairs, or dollies) it is recommended to glue PRIME Waterproof Flooring down and permanently into place.

Adhesives (for direct sunlight/heavy load areas)

1. One-part acrylic pressure sensitive adhesive is the recommended adhesive.
2. Do not install over concrete floors that are excessively cold or radiant-heated floors with temperatures that exceed 85°F(25°C). Radiant heating should be turned off 12 hours before commencing installation.
3. The trowel size to be used is a U notch trowel of 1/32" inch deep notch, by 1/16" wide notch, by 1/32" apart spacing between notches. (Gundlach 680-FFA trowel)
4. Adhesive must achieve a 95% or greater transfer of the adhesive to the backing of the tile.
5. Set tile according to diagrams on back of page.
6. Roll with a 100lb roller.

The recommended open time for the pressure sensitive adhesive is from 30 to 60 minutes open time and with a working time of approximately 2 hours to set the tiles in place (do not let the open adhesive become contaminated with dirt, dust, humidity, condensation, or any other contaminants from the air) immediately after setting the tiles, roll with a 100lb roller.